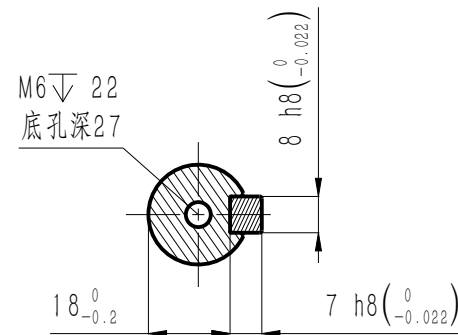
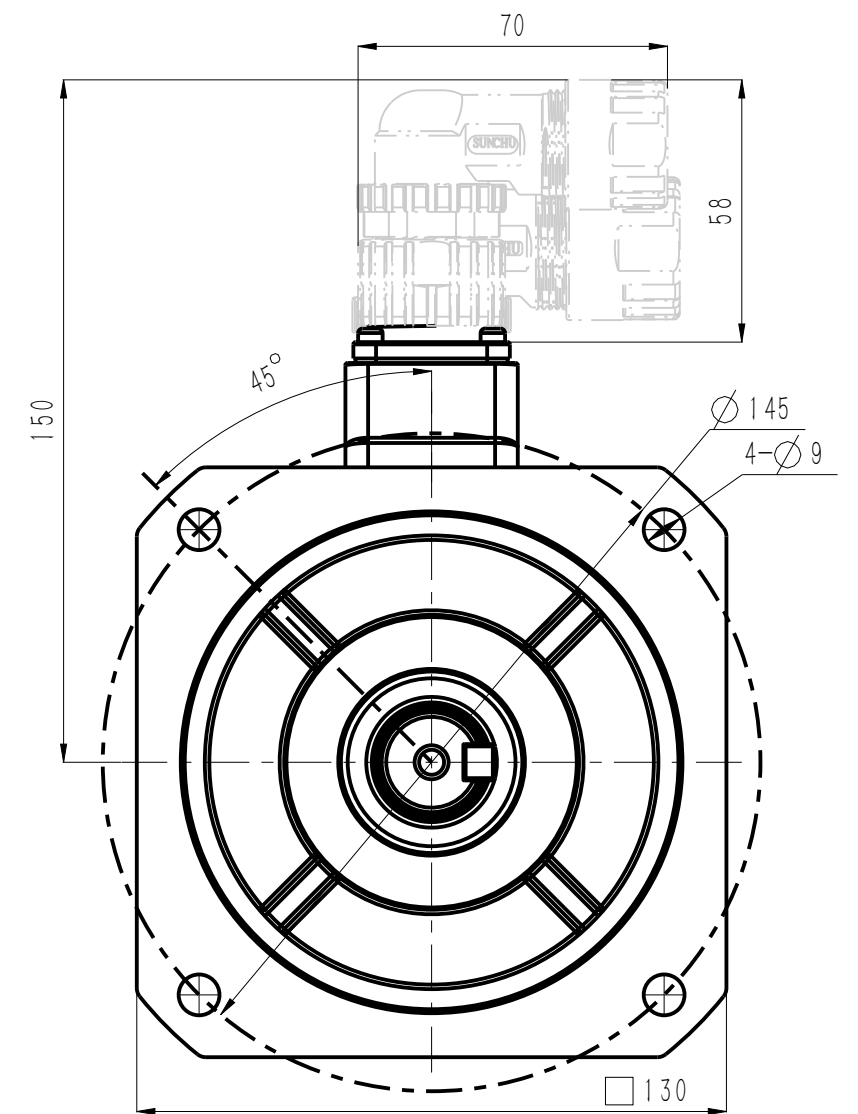
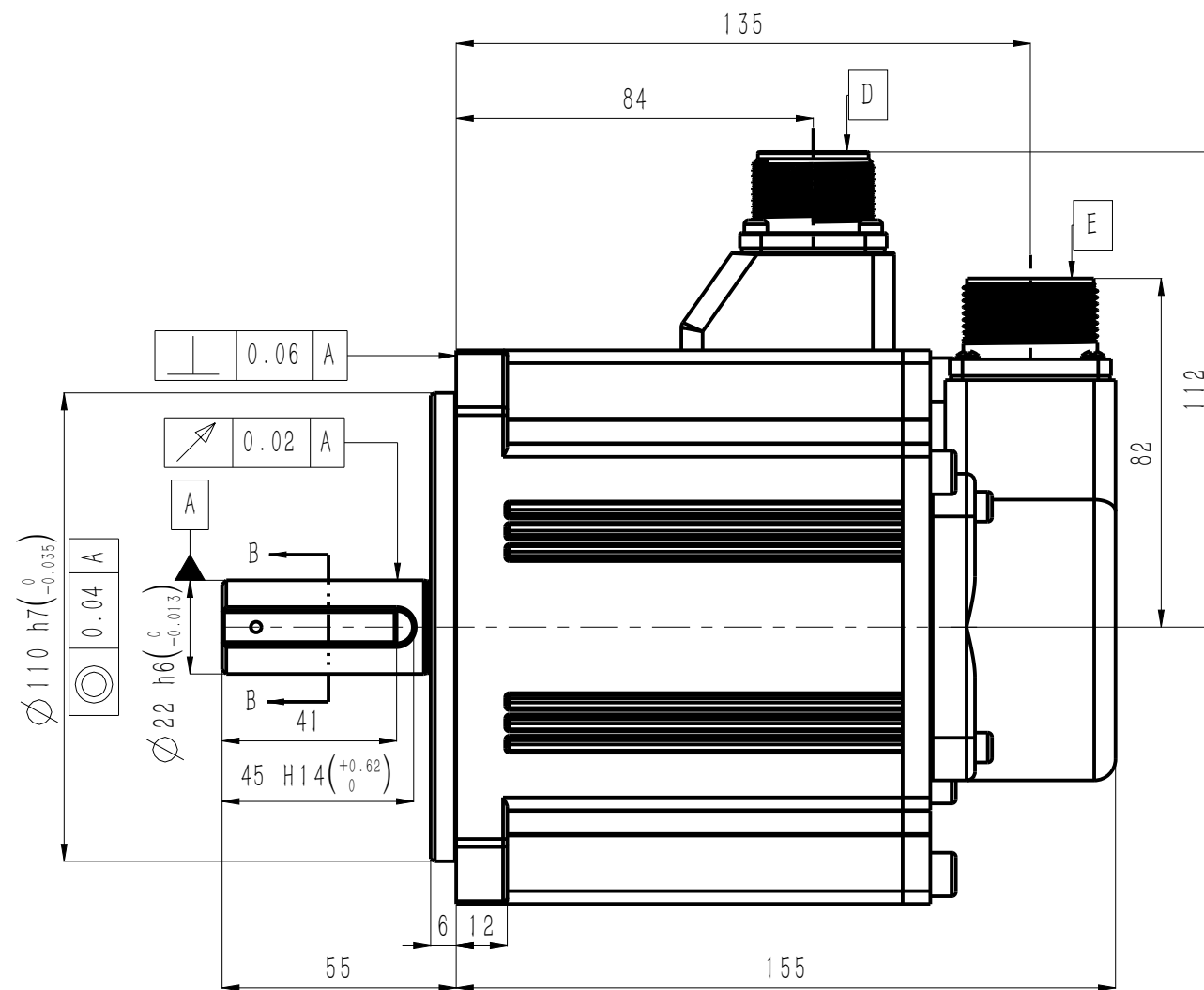


| 版本 Edition | 变更内容 Description of the change |
|------------|--------------------------------|
| B | 外形图模板更新 |





截面B-B

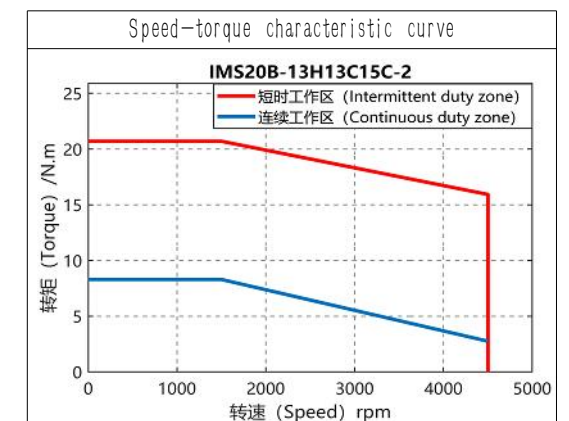
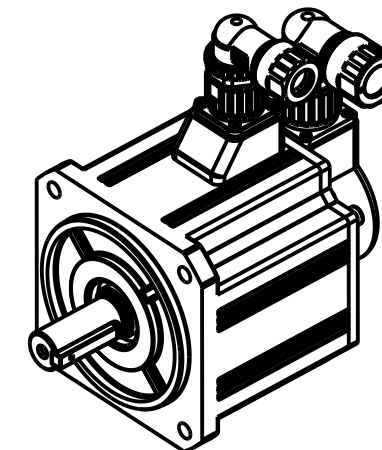



电机技术参数 Motor parameters

| | | |
|------------------------------|-----------------|----------------------|
| 额定电压 Rated voltage | 220 | V AC |
| 额定功率 Rated power | 1.3 | kW |
| 额定扭矩 Rated torque | 8.3 | N · m |
| 峰值扭矩 Peak torque | 20.7 | N · m |
| 额定电流 Rated current | 9.9 | Arms |
| 峰值电流 Peak current | 24.8 | Arms |
| 额定转速 Rated speed | 1500 | rpm |
| 峰值转速 Maximum speed | 4500 | rpm |
| 扭矩系数 Torque constant | 0.83 | N · m/Arms |
| 反电势常数 Back EMF constant | 56.1 | V/krpm |
| 线电阻 line resistance | 0.39 | Ω |
| 线电感 line inductance | 2.7 | mH |
| 转动惯量 Moment of inertia | $17.9 \pm 10\%$ | kg · cm ² |
| 轴向允许载荷 Axial allowable load | 196 | N |
| 径向允许载荷 Radial allowable load | 565 | N |
| 极对数 Number of pole pairs | 5 | 对 |

| | | | | | | | |
|--|--|---------------------------|---|---|----|---|---|
| 动力航插规格 Power connector | | 引线定义 Wiring definition | | | | | |
| CMS05A18-A6P | | A | B | C | D | 1 | 2 |
| <div>D</div>  | | W | V | U | PE | — | |

| | | | | | | | | | | | |
|---|---|----|---|---|---------------------------|-----|------|------|-----|-----|-----|
| IP 防护等级 Ingress Protection Rating | IP67 | | 信号航插规格 Encoder connector | 编码器规格 Connector specifications | 引线定义 Wiring definition | | | | | | |
| 绝缘等级 Insulation class | F | | | | | | | | | | |
| 绝缘电阻 Insulation resistance | >100MΩ DC500V | | | | | | | | | | |
| 电机重量 Motor weight | 7.2 | kg | CMS3102A20-29P <div>E</div> | 17位多圈磁编 23位多圈光编 17-bit magnetic encoder 23-bit optical encoder | A | B | E | F | G | H | J |
| 工作温度 Operating temperature | -20℃~40℃ | | | | SD+ | SD- | BAT+ | BAT- | +5V | 0V | PE |
| 工作湿度 Operating humidity | 20%~80% (不结露 Non-dewfall) | | | | (蓝) | (黄) | (棕) | (白) | (红) | (黑) | (绿) |
| 推荐安装海拔 Recommend installing altitude | <1000m(1km以上降额使用) (Derate for use above 1km) | | | | | | | | | | |



| | | | | | |
|-----|-------------|------------------------------|----------|----------------------------------|---|
| SN | 料号 P/N | 整机型号 Model and Specification | | 编码器 Encoder | |
| 1 | 11101-01327 | IMS20B-13H13C15C-2-M4-AUL | | 17位多圈磁编 | |
| 2 | 11101-01329 | IMS20B-13H13C15C-2-P9-AUL | | 23位多圈光编 | |
| | | | | 深圳市英威腾电气股份有限公司 | |
| B | 替 换 | / | 20260205 | Shenzhen INVT Electric Co., Ltd. | |
| A | 新归档 | / | 20250928 | 名 称 | 电机外形图 Motor outline dimension drawing |
| 版 本 | 更改方式 | 更改人 | 日期 | | |
| 设 计 | / | | | 料 号 | / |
| 校 核 | / | | | | |
| 工 艺 | / | | | 图 号 | / |
| 审 核 | / | | | | |
| 标准化 | / | | | 重 量 | / |
| 批 准 | / | | | | |
| | | | | 投影标识 |  |
| | | | | 比 例 | 1 : 1 |
| | | | | 第 1 页 共 1 页 | |